



# News Magazine

Volume XXVII, Number 4

Summer 2017

## 2017 Annual Conference



**Jill Jackson**

Keynote Speaker

**September 10 - 12, 2017**

**L'auberge Casino Hotel Event Center**

**Mission Statement:** To provide quality School-based Administrative Leadership for Louisiana schools through Professional Development, Legislation and Member Services.

**LAP Office - North**

103 Crawford St. • Winnfield, LA 71483  
Phone: (318) 648-2999

Web Site:  
[www.lapprincipals.org](http://www.lapprincipals.org)

Toll free 800-238-9371 • FAX 318-648-2990

**LAP Office - South**

P. O. Box 488 • LaPlace, LA 70069  
Phone: (504) 909-4650

E-mail:  
[debra.schum@lapprincipals.org](mailto:debra.schum@lapprincipals.org)

# Save The Date

**CECIL J. PICARD EDUCATOR EXCELLENCE AWARDS GALA**  
**“Starry, Starry Night: An Evening of Distinction”**  
July 28, 2017 - 5:30 to 10:00 PM | Crowne Plaza Hotel in Baton Rouge

The Louisiana Department of Education and Dream Teachers, in cooperation with the Louisiana Association of Principals, will honor Louisiana educators to celebrate their outstanding achievements for 2017 at a black-tie optional event in Baton Rouge.

The stars will shine as the Teacher and Principal of the Year semi-finalists and finalists are honored, as well as the finalists for the prestigious H. Norman Saurage III Service Award. Two Milken Educator Award winners and the winning school for the national TAP Founder's Award will add sparkle to a star-filled evening that concludes with the announcement of the 2018 Louisiana Teacher of the Year, the 2018 Principal of the Year, and the winner of the H. Norman Saurage III Service Award for 2017.

*You are cordially invited to attend the elegant cocktail reception and dinner in support of these extraordinary educators. Individual or Group tickets may be purchased online at [www.dreamteachers.org](http://www.dreamteachers.org).*

## REGISTRATION

Opens May 1 and closes July 15.

Ticket price is \$65 and includes the Cocktail Reception and Awards Dinner.

ALL SEATING RESERVED.

### EARLY BIRD REGISTRATION DISCOUNT

May 1 through June 1

20% off regular ticket price of \$65

### SCHOOL DISCOUNT BULK PURCHASE

25% off a table for 10 (\$650) when reserved by  
and billed to schools or school districts

For more information about the Teacher of the Year and Principal of the Year programs, contact [ExcellentEducators@la.gov](mailto:ExcellentEducators@la.gov).

For more information about the event and registration, contact [Kay@dreamteachers.org](mailto:Kay@dreamteachers.org).

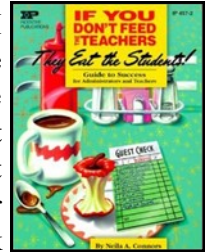




# President's Message

Niki Fryou

I have been a principal for 11 years and have grown a lot since my first assistant principal job. I quickly learned that being a good leader is more than having the schedule complete, or making sure the bells work, or that my PLC meetings have fresh coffee and donuts. It's more about building positive relationships with the staff, students, and the community. Yes, all of those other tasks are important, but the climate and atmosphere of YOUR building can make a huge difference. As you reflect on this past school year, please take some time to think about how you are making a difference by encouraging your staff and students, and how you are building the culture you and the community desire. Read the book by Neila A. Conners. It is full of practical tips in an easy to read format!



It has been a great year to serve as President of LAP. I have enjoyed meeting and working with so many instructional leaders all over the state and I am excited to watch our organization grow and move forward with all the opportunities and challenges facing us! I am certain that the opportunities I have had while serving on the board of LAP have increased my knowledge and confidence in leadership. I am appreciative of the people and friends who have crossed my path and made their marks on my life. I know I have become the leader I am because of all of you....you have created a handprint on my life that will stay with me always. Thanks for all you have done to support me and nurture my growth. I am better today because our paths have crossed. Happy summer....relax, reenergize, and renew because there is always better things to come.

*Niki*

Niki Fryou, LAP President

CONNECTING GREAT LEADERS ACROSS ALL LEVELS

# 2017 NATIONAL PRINCIPALS CONFERENCE

It's time for school leaders to unite with peers across the Pre-K-12 continuum.

At the 2017 National Principals Conference, you will connect with great leaders from all levels, learn from your collective experiences, and make new connections that will last well beyond the conference. Come to Philadelphia this summer and experience what it means to connect, innovate, and grow.

## Register Today!

JULY 9-11, 2017

PHILADELPHIA, PA

[principalsconference.org](http://principalsconference.org) #NPC17





## National Evaluation of Curriculum Effectiveness



### Curriculum Matters

*What math curriculum does your school use?*

***Each year, schools and districts spend over \$12 billion on new curriculum materials.***

***Please help us better understand how this investment supports teaching and learning at your school and schools across the country.***

The National Evaluation of Curriculum Effectiveness is gathering information about the textbooks and instructional materials that schools use to teach fourth- and fifth-grade math in order to investigate how effective they are in supporting teachers and students.

If your school was selected to participate in our online survey, you will receive an email that includes “Harvard Research Study” in the subject line.

We have made it easy for you to help improve the use of effective curriculum materials:

- Identify someone in your school knowledgeable about fourth-/fifth-grade math curriculum
- Complete the short, online survey
- Receive a \$50 stipend for your time

For more information about the study: [bit.ly/harvard-nece](https://bit.ly/harvard-nece)



From The Desk of The

*Executive  
Director*

Debra Schum

Hi all,

I hope this finds you well and taking some time this summer to rest, relax and replenish for the next school year!

LAP is continuing to make sure your voice is heard in regards to the proposed ESSA plan specifically in the following areas:

- **Subgroup performance should be reported by percentile rankings in addition to academic performance; the plan should include a system of identifying low subgroup performance levels, including performance levels equivalent to D and F grades for that subgroup, as requiring “urgent intervention.” The LDOE has indicated that 999 out of the 1400 public and charter schools in the state will receive this label** (this will be designated on the school report card)—however the plan does not stipulate any support from the State for schools that receive that label or any details about what urgent intervention means for schools that receive that label.
- The Interests and Opportunities indicator should include a menu of means by which schools could demonstrate success; the LDE should convene school system administrators to develop the measures necessary to create this.

We must continue to ask BESE members and Superintendent White to revise the plan, even though it was submitted to the USDOE, there is still an opportunity to amend prior to it becoming policy in Louisiana. The last two accountability meetings were cancelled but we are hopeful that the meeting scheduled for July 17 th will allow for discussion of some of these issues.

NOW more than ever we need site based administrators to Join LAP! We have constantly changing rules and a diminishing workforce—and the most recent action by Superintendent White and a majority of the BESE board signify that it is more

important than ever to have the Principal's voice heard on key education issues. **Please encourage your co-workers to become members of LAP**---the more members we have the more our voice is heard! We are the only organization that is affiliated with the national principal's organizations (NAESP and NASSP) and we advocate for principals/site based administrators at the national level also!

The Louisiana Legislative Session ended on June 8<sup>th</sup> with no major cuts to the MFP. Thank you for contacting legislators to help keep the MFP whole and for preventing other legislation from passing that would have given unfunded mandates to local districts in regards to dual enrollment classes.

On the national level, please contact your congressman regarding Title II funding--the proposed federal budget literally wipes out All Title II funding for 2018!

We also want to remind you to check out the following information in this newsletter:

1. National Principals Conference which will be held July 9-11 in Philadelphia. This will mark the first time that NASSP and NAESP have held a joint conference—it should be a great professional development opportunity for all principals. Currently 120 administrators from Louisiana are registered which is a record number for our state!
2. Fall Annual Principals Conference---September 10-12--L'Auberge Casino Event Center--Baton Rouge
3. Assistant Principals Conference -- November 6<sup>th</sup>--Golden Nugget Casino--Lake Charles
4. National Evaluation of Curriculum Effectiveness--check out this information from Harvard that will provide you with important research on math curriculum in grades 4-5 and earn a \$50 stipend.

*(Continued on page 6)*

(Continued from page 5)

5. Breakfast in the Classroom--apply for a grant for your school and feed ALL students in your school a free breakfast!

Thanks for all that you do! Please feel free to contact me at [debra.schum@laprincipals.org](mailto:debra.schum@laprincipals.org) if you have any questions or concerns!

Sincerely,  
*Debbie*  
Debbie Schum

---

## FRAC Webinar: Engaging Educators in Breakfast After the Bell

Thursday, July 13, 3 p.m. Eastern | [Register here.](#)

Educators are key to implementing successful breakfast after the bell programs. Join this webinar to learn how you can engage teachers, principals, and administrators to create effective and sustainable programs, such as breakfast in the classroom, "grab and go," and second chance. Resources also will be shared to help ensure a smooth and successful transition to a breakfast after the bell program.

### Speakers:

- Joan Auchter, National Association of Secondary School Principals (NAESP)
- Chelsea Prax, AFT Children's Health and Well-Being
- Etienne Melcher, Food Research & Action Center

**Principals,**

Don't keep it a secret any longer!!!  
Let everyone know what a GREAT  
assistant principal you have!

Nominate your assistant principal for  
the 2017 Louisiana Assistant Principal of  
the Year Recognition Program.  
Don't delay!

Nomination Deadline: ~~May 31, 2017~~  
**Extended to Sept. 1!**

Go to the LAP website to download a  
nomination form.



## LAP Board Members Attend NASSP Advocacy Conference in Washington DC

NASSP held its Advocacy Conference in Washington DC April 24-26, 2017. The NASSP Advocacy Conference provided principals with the opportunity to speak in a unified voice on Capitol Hill. LAP Board Members advocated for Louisiana education with various representatives. Board Members that attended the conference are Jane Griffin, NASSP State Coordinator and Principal at WSHS in Winn Parish; Jemi Carlone, President-Elect and Principal at Belle Chasse High School in Plaquemine Parish; Karen Triche, District 8 Representative and Principal at Tara High School in Baton Rouge and Debbie Schum, LAP Executive Director.



**John Kennedy**



**Bill Cassidy**



### School Leaders Supporting Literacy

The PA Principals Association will be coordinating a book donation project during the National Conference in Philadelphia. Conference participants are encouraged to donate a book appropriate for the K-8 level. The books will be donated to Southhawk School which is in the School District of Philadelphia. Andrew Lukov is the principal of Southhawk School that has a population of 41% English Language Learners so Spanish versions are also needed. Books can be dropped off at the PA Principals booth adjacent to the Scholastic area. If you forget to bring a book, you can purchase one from Scholastic and donate it to this school. The PA Principals Association thanks you in advance for your support of this project. Please help us put books in the hands of these children.

### 5K Fun/Walk

The PA Principals Association is sponsoring a 5K Fun/Walk in conjunction with the National Principals Conference in Philadelphia

**Sunday, July 9<sup>th</sup>**

Register Today!

<https://www.eventbrite.com/e/principals-5-k-fun-walkrun-tickets-35005143326>



## BREAKFAST IN THE CLASSROOM GRANTS AVAILABLE FOR LOUISIANA SCHOOLS

Do you want to increase breakfast consumption among schoolchildren and spark the academic and nutritional gains associated with the morning meal through the implementation of breakfast in the classroom?

Apply today for the Partners for Breakfast in the Classroom grant.

The grant is targeted to help high-need schools and districts cover the upfront costs often associated with the startup and implementation of breakfast in the classroom and “grab n’ go” programs, such as purchasing equipment, outreach efforts to parents, program promotion, and other related expenses.

### GRANT QUALIFICATIONS

Eligible schools must meet the following criteria:

- Either 70 percent or more students qualify for free or reduced-price (FRP) meals, or else the school operates community eligibility;
- Average daily participation (ADP) in school breakfast is at 50 percent or less;
- Able to serve breakfast in the classroom at no charge to all students after the morning bell;
- Strong stakeholder support from school leadership and staff;
- 3-year commitment to making reasonable efforts to continue the program; and
- Willingness to promote the program through social media and school district communication channels.

Want to learn more? Visit [www.breakfastintheclassroom.org](http://www.breakfastintheclassroom.org) for more information about the initiative, resources, and to download the grant application.

Questions? E-mail [partnersbic@outlook.com](mailto:partnersbic@outlook.com).

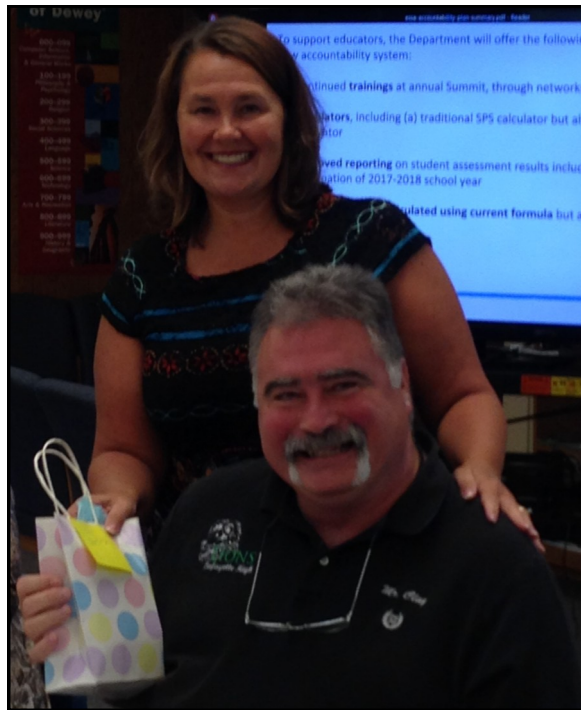
## Annual June LAP Board Meeting Held at Winnfield Sr. High School June 14



**Debbie Schum**, LAP Executive Director, presents a summary of the ESSA Plan at the Board Meeting on June 14 in Winnfield at Winnfield Sr. High School.



District 2 (Bienville, Claiborne, Jackson, Lincoln, and Union parishes) had the highest percentage membership growth for the 2016-2017 school year. **Niki Fryou**, LAP President and St. Mary principal, presented the First Place Membership Growth Certificate to **Joanne Hood**, Lincoln Parish principal, Middle School Trustee and NAESP State Representative.



**Sam Clay**, Lafayette Parish principal, was presented a gift at the June Board Meeting in recognition for his service on the Board of Directors. Shown with Sam is **Niki Fryou**, LAP President and St. Mary Parish principal. Mr. Clay has been on the Board since 2014.



For more information, visit us on the web at [www.lapprincipals.org](http://www.lapprincipals.org)

**2017 Assistant Principal's Conference**  
November 6, 2017  
Golden Nugget Hotel & Casino  
Lake Charles, Louisiana



Members:	Conference Registration
Pre-registration:	\$150
After Oct. 21	\$175
Non-Members:	\$200

NAME: \_\_\_\_\_  
 SCHOOL: \_\_\_\_\_ POSITION: \_\_\_\_\_  
 ADDRESS: \_\_\_\_\_  
 CITY/ZIP: \_\_\_\_\_

SCHOOL PHONE: \_\_\_\_\_ FAX NUMBER: \_\_\_\_\_

E-MAIL: \_\_\_\_\_ PARISH: \_\_\_\_\_

TOTAL AMOUNT ENCLOSED:  
\$ \_\_\_\_\_

Mail to: Louisiana Association of Principals, 103 Crawford St., Winnfield, LA 71483  
**CHECKS MUST BE SENT WITH REGISTRATION**

### Creating Complaint-Free Schools

### LAP's 23rd Clerical Conference

December 3-4  
 Double Tree Hotel By Hilton  
 Lafayette



**Complaining** spreads like cancer devouring schools from within. Complaining costs the average US school \$1.2 million in lost productivity alone. This doesn't even count the skyrocketing costs of employee turnover, staff conflict and student stress--all caused by complaining.

LAP welcomes **Will Bowen** to Louisiana. Will Bowen is the World Authority on complaining.

Principals: Save the date and plan **NOW** to send your clerical staff to this professional development.



#### LAP/NAESP

##### Jefferson Parish

Tamara Warner, Gretna No. 2 Academy

#### LAP

##### Calcasieu Parish

Laura Nelson, Barbe Elementary School

##### Grant Parish

Amanda Morrison, Grant High School

##### Morehouse Parish

Alton McGee

##### West Feliciana Parish

Delwyn Daigre



#### Principals Breakfast After the Bell Toolkit

This toolkit provides guidance to principals in how to effectively partner with their school nutrition department to bring "grab & go" breakfast, second-chance breakfast, or breakfast in the classroom programs to their schools. [Click for website.](#)

**Louisiana Association of Principals 66th Annual Conference Registration**  
**L'Auberge Casino Hotel, Baton Rouge**  
**September 10-12, 2017**

Member Pre-registration: \$175  
Member Registration after August 12: \$200  
Retired Members: \$ 75  
**New LAP Membership Only & Conference Registration: \$350**  
Non-Member Registration: \$400

---

Registration fees include conference gift, breakfasts, awards luncheon, sodas/coffee, continental breakfasts, door prizes, etc.

Guest Registration: **\$30.00** – (\$30) - Awards Luncheon; *If your guest intends to eat breakfast please include an additional \$17 per plate per guest.* Please list guests below.

Name \_\_\_\_\_ Position \_\_\_\_\_

School \_\_\_\_\_ Parish \_\_\_\_\_

Address/City/Zip \_\_\_\_\_

School Phone \_\_\_\_\_ Fax \_\_\_\_\_

E-Mail \_\_\_\_\_

Guest's Name - Awards Luncheon (\$30) \_\_\_\_\_

My guest will be eating breakfast – (\$17)

**With your paid registration, you may bring a team from your school (up to 3 persons) to participate on Monday, September 11. Cost per team member: \$75 each (price includes breakfast & lunch on Monday)**

I am registering the following team members at \$75 each:

(1) \_\_\_\_\_

(2) \_\_\_\_\_

(3) \_\_\_\_\_

**TOTAL AMOUNT ENCLOSED: \$ \_\_\_\_\_**

**CHECKS MUST BE SENT WITH REGISTRATION.**

Mail to: <b>Louisiana Association of Principals</b> <b>103 Crawford St.</b> <b>Winnfield, LA 71483</b>
---



# How We Help Educators

Horace Mann offers superior solutions for Louisiana Association of Principals Members



STATISTICS  
IN SCHOOLS

United States™  
**Census**  
Bureau

**Classrooms Powered by Census Data**

## ***Compare Your State***

If you are looking for engaging and educational activities to share with students, you're in luck! The Statistics in Schools State Facts for Students resource page offers a variety of tools for you to choose from.

Check out our featured activity, "Comparing My State." In this activity, students will compare data for two states and learn how to round large numbers.

Click below to access this activity, and explore other learning resources from Statistics in Schools while you're there!

**[Choose An Activity](#)**